



**Albany Police Department**

Attitude • Pride • Duty



## **“Combating Crime and Protecting Lives”**

*Prepared By the Crime Analysis Unit of The Albany Police Department*

# 2015

**Month of November**

» These numbers may be updated from month to month as records updates occur «

Distribution:

City Manager  
Assistant City Managers  
Chief Of Police  
Deputy Chief – Criminal  
Investigations  
Deputy Chief – Uniform  
Deputy Chief – Support Services  
Major - Internal Affairs

Investigations Captains  
Uniform Captains  
Special Operations Captain  
Accreditation Manager  
Family Protection  
Records Supervisor  
Planning & Research  
Training Supervisor

**\*Information Included in this Report Reflects  
Compliance with UCR Reporting Standards**

***The information contained in this report is primarily raw data until calendar year reporting.***

Please contact David Sparks, APD Crime Analyst for questions regarding this report @ 431-2878.

# Monthly Part I Crimes

## Albany Police Department

### Part I Crimes Committed During the Month of November 2015 with Comparisons of November 2014 & 2013

Actual Offenses	2015 2014 Month to Month		+/- Change		2015 2013 Month to Month		+/- Change	
Offenses Committed	November 2015	November 2014	#	%	November 2015	November 2013	#	%
Homicide	1	3	-2	-66.67	1	0	1	*NC
Rape	5	1	4	400.00	5	1	4	400.00
Robbery	19	13	6	46.15	19	16	3	18.75
Aggravated Assault	40	47	-7	-14.89	40	50	-10	-20.00
<b>Violent Crime Total</b>	<b>65</b>	<b>64</b>	<b>1</b>	<b>1.56</b>	<b>65</b>	<b>67</b>	<b>-2</b>	<b>-2.99</b>
Arson	0	3	-3	-100.00	0	0	0	*NC
Burglary	70	96	-26	-27.08	70	124	-54	-43.55
Larceny	192	204	-12	-5.88	192	228	-36	-15.79
Auto Theft	10	10	0	0.00	10	18	-8	-44.44
<b>Property Crime Total</b>	<b>272</b>	<b>313</b>	<b>-41</b>	<b>-13.10</b>	<b>272</b>	<b>370</b>	<b>-98</b>	<b>-26.49</b>
<b>Crime Trend Total</b>	<b>337</b>	<b>377</b>	<b>-40</b>	<b>-10.61</b>	<b>337</b>	<b>437</b>	<b>-100</b>	<b>-22.88</b>

### Part I Case Clearances During the Month of November 2015 with Comparisons of November 2014 & 2013

	2015	2014	2013	2015	2014	2013
Offenses Cleared	November # Cleared	November # Cleared	November # Cleared	November % Cleared	November % Cleared	November % Cleared
Homicide	1	0	0	100.00%	0.00%	*NC
Rape	1	0	0	20.00%	0.00%	0.00%
Robbery	7	5	6	36.84%	38.46%	37.50%
Aggravated Assault	27	23	22	67.50%	48.94%	44.00%
<b>Violent Crime Cleared</b>	<b>36</b>	<b>28</b>	<b>28</b>	<b>55.38%</b>	<b>43.75%</b>	<b>41.79%</b>
Arson	0	1	0	*NC	33.33%	*NC
Burglary	8	8	9	11.43%	8.33%	7.26%
Larceny	53	49	44	27.60%	24.02%	19.30%
Auto Theft	5	2	1	50.00%	20.00%	5.56%
<b>Property Crime Cleared</b>	<b>66</b>	<b>60</b>	<b>54</b>	<b>24.26%</b>	<b>19.17%</b>	<b>14.59%</b>
<b>Clearance Total</b>	<b>102</b>	<b>88</b>	<b>82</b>	<b>30.27%</b>	<b>23.34%</b>	<b>18.76%</b>

\* The Crime Trend and Clearance Totals do not include percentages for numbers not divisible by 0.

# Year to Date Part I Crimes

## Albany Police Department

Part I Crimes Committed Year-to-date as of November 2015 with Comparisons of November 2014 & 2013								
Actual Offenses	2015 Year to Date		2014 Year to Date		+/- Change			
	November 2015	November 2014	#		%			
Offenses Committed								
Homicide	9	8	1		12.50			
Rape	34	25	9		36.00			
Robbery	183	147	36		24.49			
Aggravated Assault	503	483	20		4.14			
<b>Violent Crime Total</b>	<b>729</b>	<b>663</b>	<b>66</b>		<b>9.95</b>			
Arson	24	16	8		50.00			
Burglary	1036	1073	-37		-3.45			
Larceny	2425	2637	-212		-8.04			
Auto Theft	163	159	4		2.52			
<b>Property Crime Total</b>	<b>3648</b>	<b>3885</b>	<b>-237</b>		<b>-6.10</b>			
<b>Crime Trend Total</b>	<b>4377</b>	<b>4548</b>	<b>-171</b>		<b>-3.76</b>			

Part I Case Clearances Year-to-date as of November 2015 with Comparisons of November 2014 & 2013								
	2015 Year to Date		2014 Year to Date		2013 Year to Date			
Offenses Cleared	November # Cleared	November # Cleared	November # Cleared			November % Cleared	November % Cleared	November % Cleared
Homicide	7	4	5			77.78%	50.00%	71.43%
Rape	15	18	6			44.12%	72.00%	35.29%
Robbery	53	37	48			28.96%	25.17%	29.63%
Aggravated Assault	266	228	206			52.88%	47.20%	41.87%
<b>Violent Crime Cleared</b>	<b>341</b>	<b>287</b>	<b>265</b>			<b>46.78%</b>	<b>43.29%</b>	<b>39.09%</b>
Arson	12	1	7			50.00%	6.25%	36.84%
Burglary	160	124	146			15.44%	11.56%	12.43%
Larceny	549	572	573			22.64%	21.69%	19.52%
Auto Theft	52	42	35			31.90%	26.42%	21.47%
<b>Property Crime Cleared</b>	<b>773</b>	<b>739</b>	<b>761</b>			<b>21.19%</b>	<b>19.02%</b>	<b>17.73%</b>
<b>Clearance Total</b>	<b>1114</b>	<b>1026</b>	<b>1026</b>			<b>25.45%</b>	<b>22.56%</b>	<b>20.64%</b>

\* The Crime Trend and Clearance Totals do not include percentages for numbers not divisible by 0.

# Monthly Part II and Other Crimes

## Albany Police Department

Part II Crime Comparison of November 2014 Data with Previous Year/Month									
Part II Crimes	November 2015	November 2014	+/- #	Change %		November 2015	October 2015	+/- #	Change %
Disorderly Conduct	54	69	-15	-21.74		54	107	-53	-49.53
Domestic Violence	60	155	-95	-61.29		60	57	3	5.26
Disorderly w/intoxicated	0	0	0	*NC		0	0	0	*NC
D.U.I.	12	6	6	100.00		12	9	3	33.33
Child Molestation	2	3	-1	-33.33		2	3	-1	-33.33
Cruelty to Child	0	4	-4	-100.00		0	0	0	*NC
Child Protec: Curfew	0	0	0	*NC		0	0	0	*NC
Child Protec:Truancy	0	0	0	*NC		0	0	0	*NC
Interfere w/Custody	0	5	-5	-100.00		0	0	0	*NC
Child Abandonment	0	0	0	*NC		0	0	0	*NC
Enticing a Child	0	0	0	*NC		0	0	0	*NC
Forgery	18	12	6	50.00		18	17	1	5.88
Noise Ordinance Viol.	0	0	0	*NC		0	0	0	*NC
Harassing Phone Calls	9	5	4	80.00		9	3	6	200.00
Loitering	1	5	-4	-80.00		1	2	-1	-50.00
Missing Persons	10	18	-8	-44.44		10	17	-7	-41.18
Runaway	6	2	4	200.00		6	2	4	200.00
Suicide	8	1	7	700.00		8	9	-1	-11.11
Underage Poss./Consum.	0	3	-3	-100.00		0	2	-2	-100.00
Criminal Damage	18	28	-10	-35.71		18	26	-8	-30.77
Theft: Gas Drive Off	2	2	0	0.00		2	0	2	*NC
Simple Assault	1	2	-1	-50.00		1	0	1	*NC
Simple Battery	6	81	-75	-92.59		6	15	-9	-60.00
Battery	12	26	-14	-53.85		12	10	2	20.00
Obstruct/Hinder Police	4	20	-16	-80.00		4	19	-15	-78.95
Sexual Battery	3	0	3	*NC		3	1	2	200.00
Open Container	7	16	-9	-56.25		7	5	2	40.00
Sodomy	1	0	1	*NC		1	1	0	0.00
Statutory Rape	0	0	0	*NC		0	0	0	*NC
Saggy Pants	6	1	5	500.00		6	7	-1	-14.29
All Cases Not Listed	216	457	-241	-52.74		216	301	-85	-28.24
Total Part II Crime	456	921	-465	-50.49		456	613	-157	-25.61

\*\* The Crime Trend and Clearance Totals do not include percentages for numbers not able to be divided by 0.

# Year to Date Part II and Other Crimes

## Albany Police Department

Part II Crime Comparison of 2015 Year to Date with Previous Years 2014 & 2013									
Part II Crimes	YTD 2015	YTD 2014	+/- #	Change %		YTD 2015	YTD 2013	+/- #	Change %
Disorderly Conduct	798	744	54	7.26		798	826	-28	-3.39
Domestic Violence	1341	1477	-136	-9.21		1341	1680	-339	-20.18
Disorderly wh/intoxicated	2	0	2	*NC		2	0	2	*NC
D.U.I.	114	119	-5	-4.20		114	111	3	2.70
Child Molestation	24	42	-18	-42.86		24	35	-11	-31.43
Child Cruelty	17	48	-31	-64.58		17	42	-25	-59.52
Curfew	3	0	3	*NC		3	3	0	0.00
Truancy	5	1	4	400.00		5	3	2	66.67
Interfere w/Custody	35	49	-14	-28.57		35	10	25	250.00
Child Abandonment	0	0	0	*NC		0	0	0	*NC
Enticing a Child	2	1	1	100.00		2	1	1	100.00
Forgery	135	135	0	0.00		135	212	-77	-36.32
Noise Ordinance Viol.	0	4	-4	-100.00		0	1	-1	-100.00
Harassing Phone Calls	55	69	-14	-20.29		55	70	-15	-21.43
Loitering	21	32	-11	-34.38		21	39	-18	-46.15
Missing Persons	204	227	-23	-10.13		204	221	-17	-7.69
Runaway	27	9	18	200.00		27	7	20	285.71
Suicide	41	5	36	720.00		41	4	37	925.00
Underage Poss./Consum.	5	27	-22	-81.48		5	19	-14	-73.68
Criminal Damage	226	281	-55	-19.57		226	256	-30	-11.72
Theft: Gas Drive Off	7	10	-3	-30.00		7	11	-4	-36.36
Simple Assault	36	27	9	33.33		36	92	-56	-60.87
Simple Battery	441	981	-540	-55.05		441	921	-480	-52.12
Battery	180	278	-98	-35.25		180	320	-140	-43.75
Obstruction of Officer	137	241	-104	-43.15		137	307	-170	-55.37
Sexual Battery	20	17	3	17.65		20	21	-1	-4.76
Open Container	119	194	-75	-38.66		119	130	-11	-8.46
Sodomy	5	15	-10	-66.67		5	15	-10	-66.67
Statutory Rape	4	7	-3	-42.86		4	8	-4	-50.00
Saggy Pants	65	149	-84	-56.38		65	321	-256	-79.75
All Other Cases	4266	6626	-2360	-35.62		4266	6503	-2237	-34.40
Total Part II Crime	8335	11815	-3480	-29.45		8335	12189	-3854	-31.62

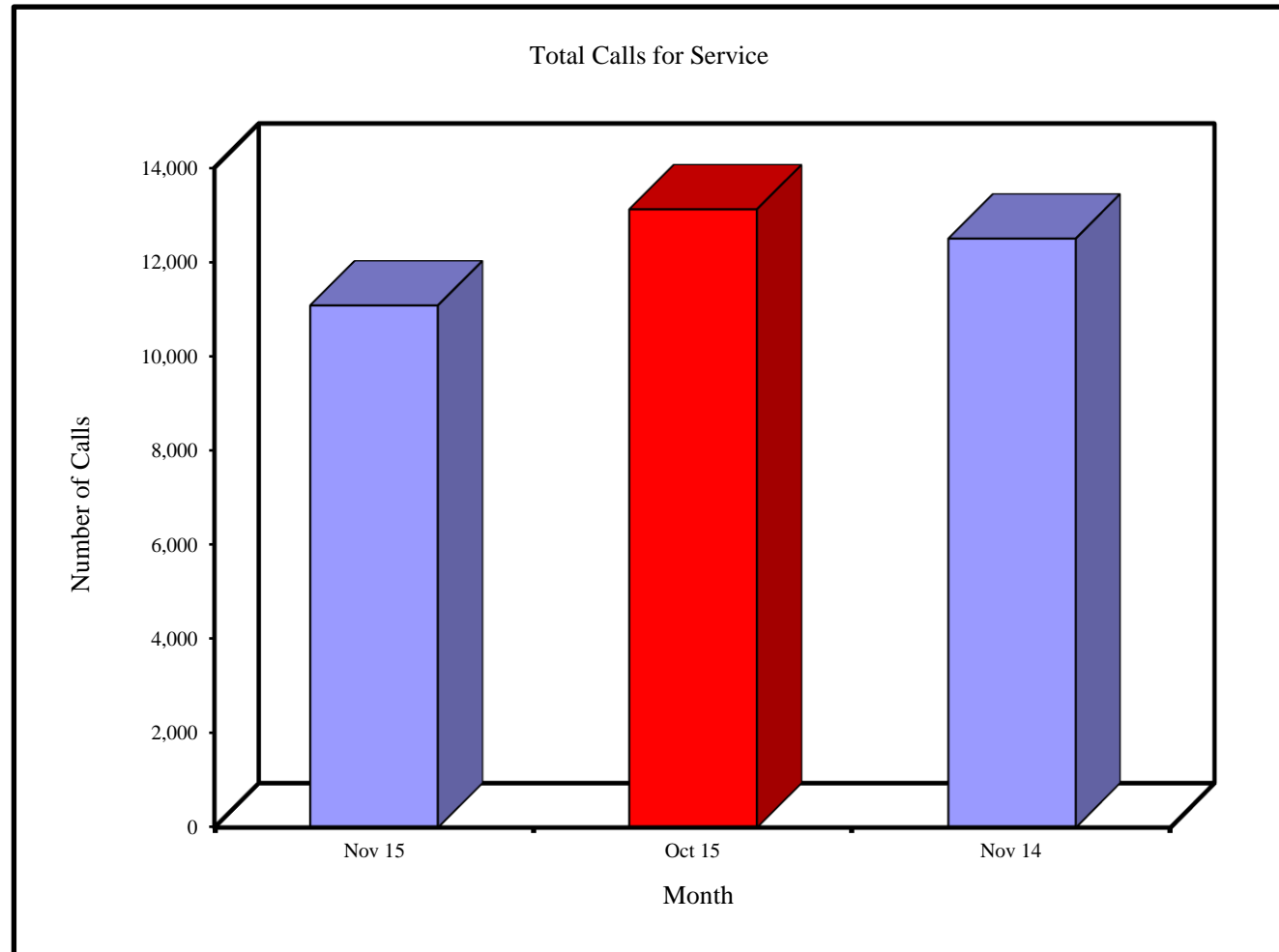
\*\* The Crime Trend and Clearance Totals do not include percentages for numbers not able to be divided by 0.

# Monthly Total Calls for Service

## Albany Police Department

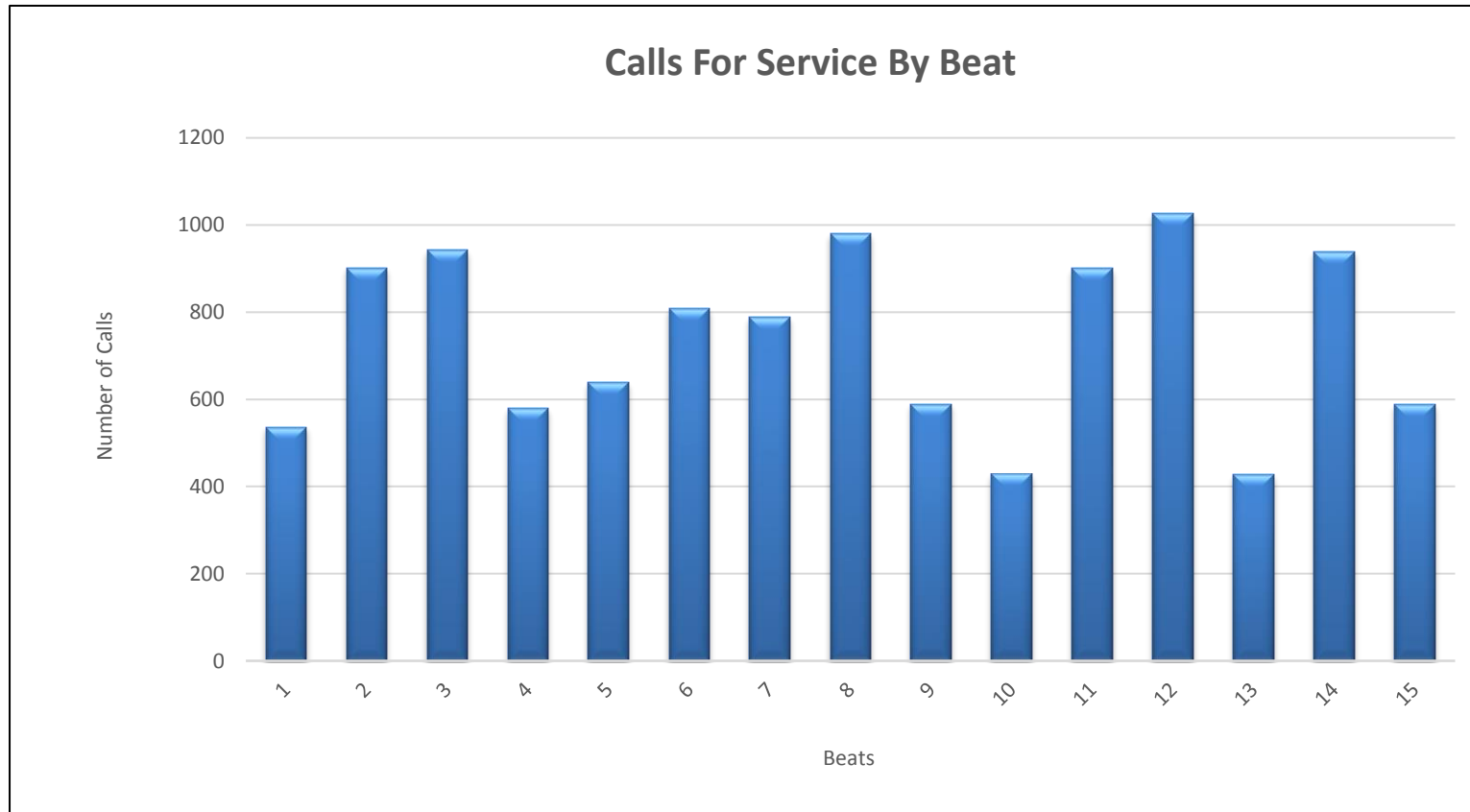
### Total Calls For Service

Nov 15	Oct 15	Nov 14
11,078	13,118	12,497



# Monthly Calls for Service by Beats

## Albany Police Department

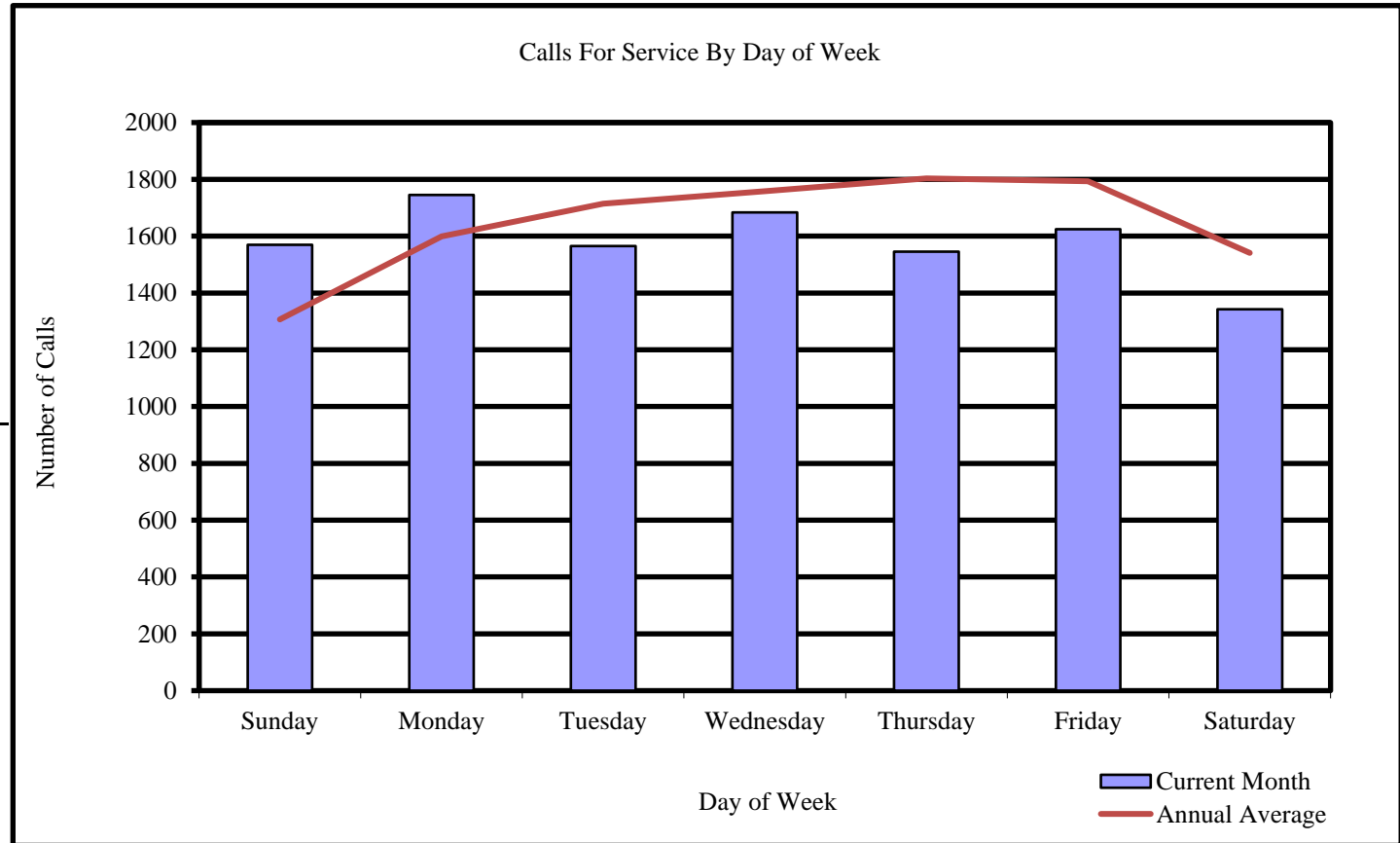


Beats	1	2	3	4	5	6	7	8	9	10	11	12	13	14	15
Calls in Nov 2015	537	902	943	580	639	808	788	980	589	429	901	1027	427	940	588

# Monthly Calls for Service by Day of Week

## Albany Police Department

<u>Calls For Service</u>	
Day	Nov 2015
Sunday	1570
Monday	1745
Tuesday	1565
Wednesday	1684
Thursday	1546
Friday	1625
Saturday	1343
	<hr/> 11078



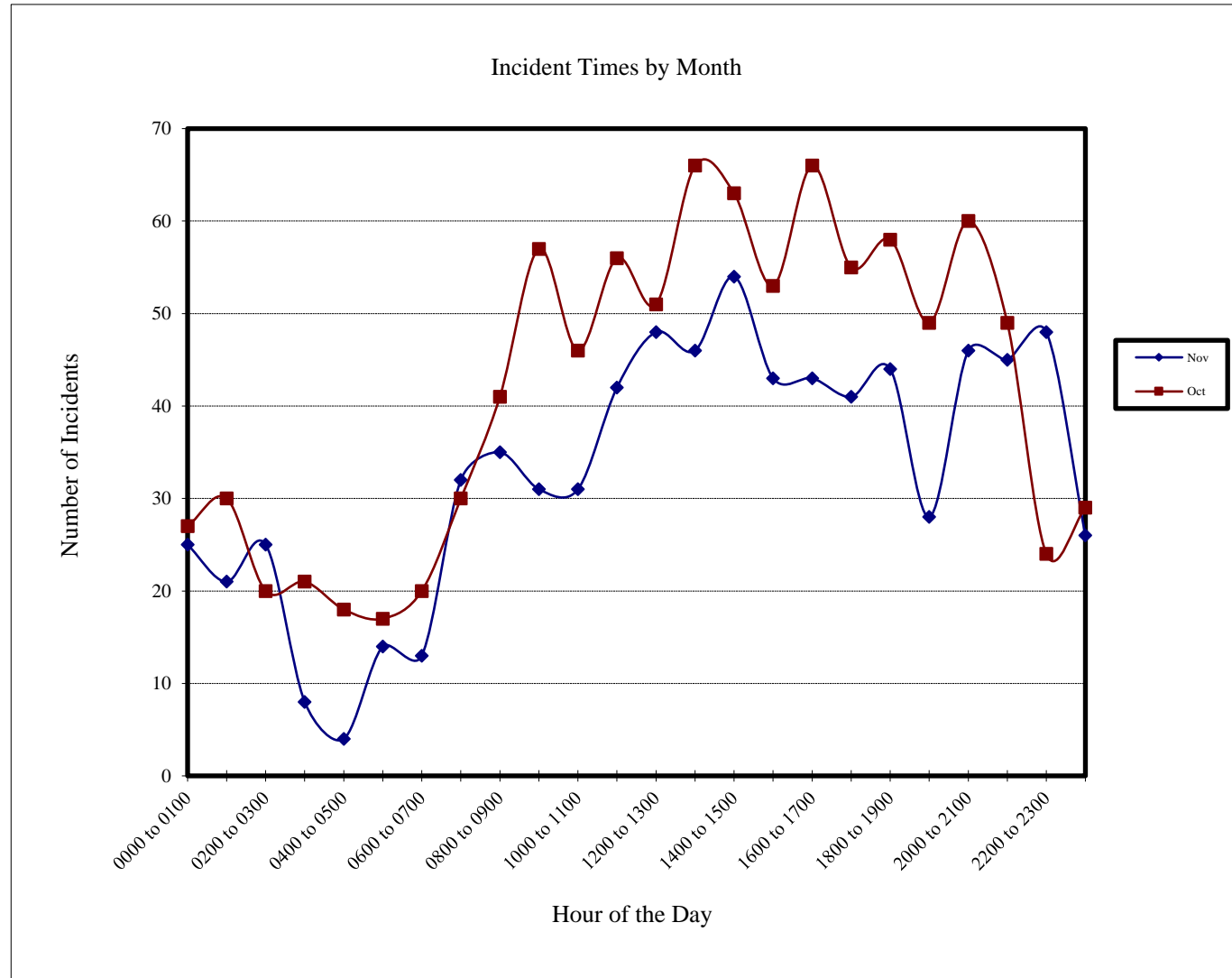


# Incidents by Hour

## Albany Police Department

### Incident Times by Month

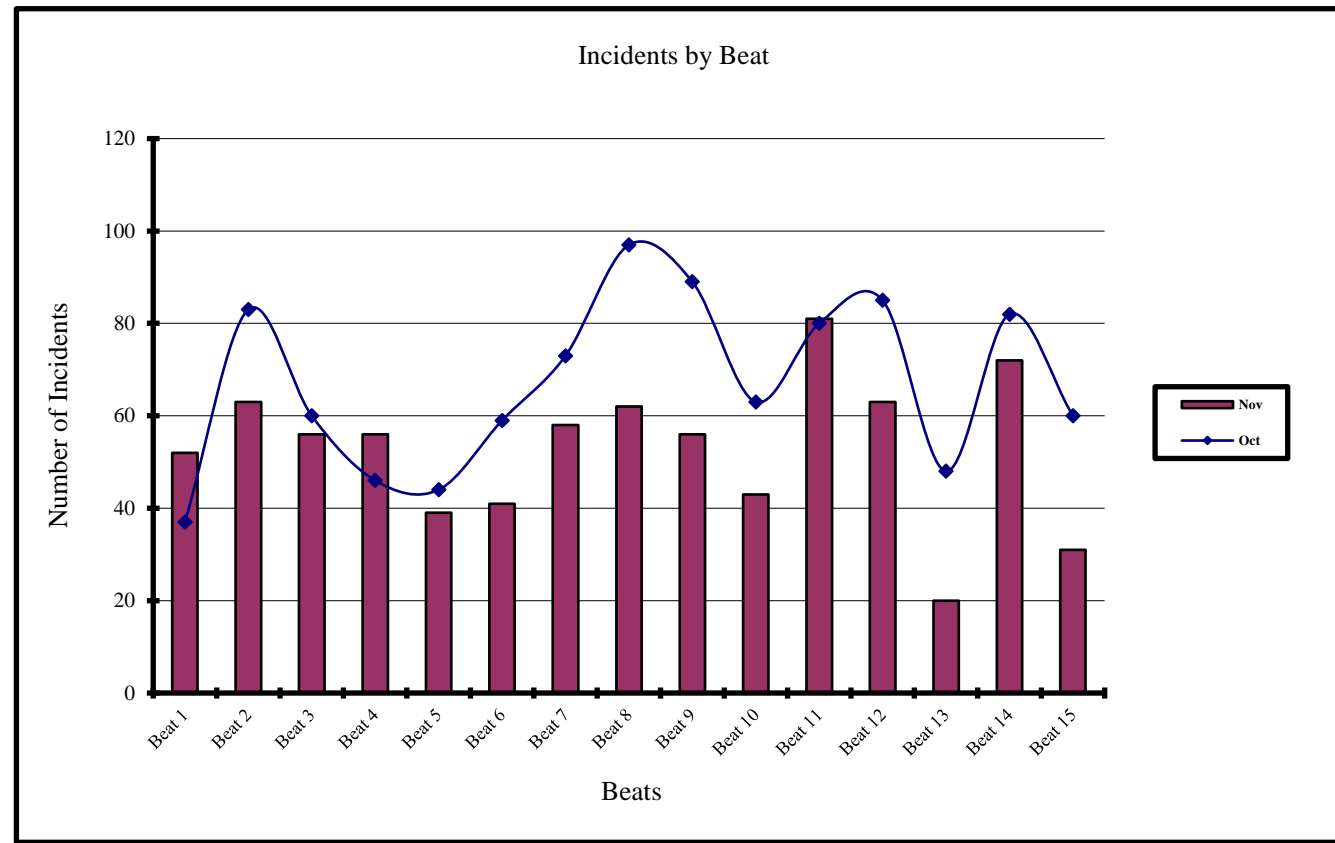
Hour of Day	Nov 2015	Oct 2015
0000 to 0100	25	27
0100 to 0200	21	30
0200 to 0300	25	20
0300 to 0400	8	21
0400 to 0500	4	18
0500 to 0600	14	17
0600 to 0700	13	20
0700 to 0800	32	30
0800 to 0900	35	41
0900 to 1000	31	57
1000 to 1100	31	46
1100 to 1200	42	56
1200 to 1300	48	51
1300 to 1400	46	66
1400 to 1500	54	63
1500 to 1600	43	53
1600 to 1700	43	66
1700 to 1800	41	55
1800 to 1900	44	58
1900 to 2000	28	49
2000 to 2100	46	60
2100 to 2200	45	49
2200 to 2300	48	24
2300 to 2400	26	29



# Current and Previous Months Comparison of Incidents by Beat

## Albany Police Department

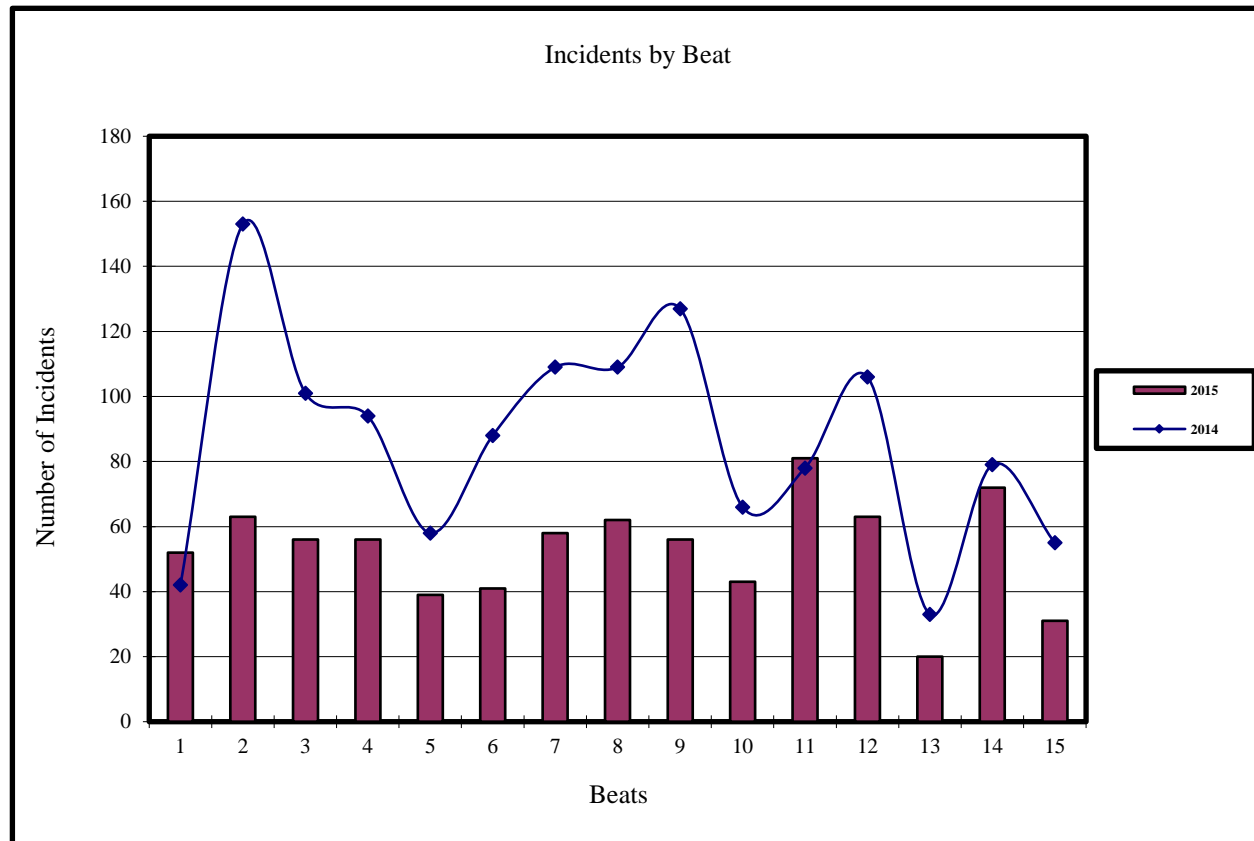
Beat	Incidents	
	Nov 2015	Oct 2015
Beat 1	52	37
Beat 2	63	83
Beat 3	56	60
Beat 4	56	46
Beat 5	39	44
Beat 6	41	59
Beat 7	58	73
Beat 8	62	97
Beat 9	56	89
Beat 10	43	63
Beat 11	81	80
Beat 12	63	85
Beat 13	20	48
Beat 14	72	82
Beat 15	31	60



# Current and Previous Year Comparision of Incidents by Beat

## Albany Police Department

Incidents		
Beat	Nov 2015	Nov 2014
Beat 1	52	42
Beat 2	63	153
Beat 3	56	101
Beat 4	56	94
Beat 5	39	58
Beat 6	41	88
Beat 7	58	109
Beat 8	62	109
Beat 9	56	127
Beat 10	43	66
Beat 11	81	78
Beat 12	63	106
Beat 13	20	33
Beat 14	72	79
Beat 15	31	55



# Current and Previous Month Comparison of Monthly Incidents by Day of Week Albany Police Department

Incidents		
Day	Nov 2015	Oct 2015
Sunday	112	134
Monday	134	144
Tuesday	93	133
Wednesday	109	136
Thursday	99	147
Friday	121	151
Saturday	125	161

